

Case Study // Car Parks //

Client
Role
Consultant

Wm Morrison Supermarkets plc
Principal Contractor
Stripe Consulting

Retail Shopper Car Park Refurbishment

Morrisons Store Rooftop Car Park, Herne Bay, Kent

SCOPE

- // Concrete Repairs
- // Deck Waterproofing
- // Linemarking
- // Movement Joints

DETAILS

- // Two-level 80-space car park
- // 2,500m² asphalt rooftop deck
- // Sika's fully-reinforced Pronto 32 system applied to all areas

Case Study // Car Parks

Client | Wm Morrison Supermarkets plc
 Role | Principal Contractor
 Consultant | Stripe Consulting

Before: Asphalt Waterproofing

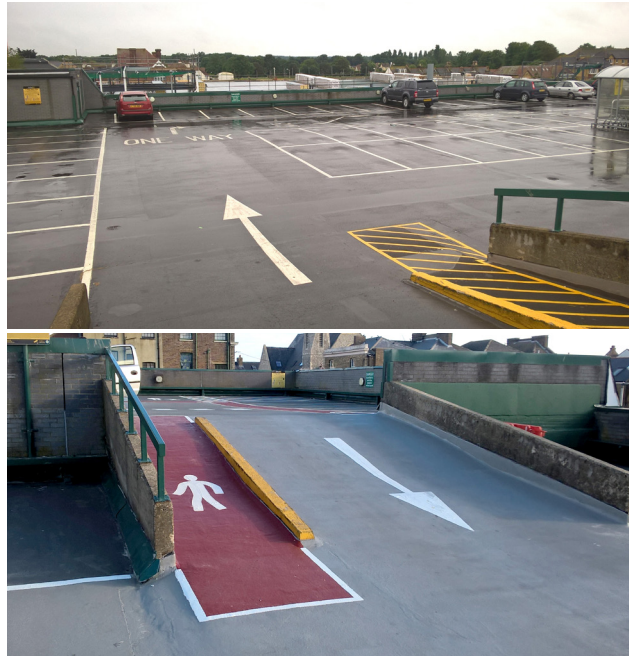


After: Asphalt Waterproofing

The car park at Morrisons Herne Bay is located on the roof of the retail store itself and is split over two levels providing approximately 80 spaces.

The existing asphalt waterproof wearing surface of the car park had become badly damaged and split over the years and was allowing significant water ingress

Before: Ramp Updating



After: Ramp Updating

into the store below. The asphalt itself – covering some 2,500m² – was prepared by planing & captive blast to remove surface imperfections & linemarkings and to provide a suitable mechanical key for the application of a new waterproofing system on top.

Before: Concrete Repairs



After: Concrete Repairs

Sika's fully-reinforced Pronto 32 system was applied to all areas including up / down ramps. Cemplas also carried out localised concrete repairs to the semi-circular vehicular access ramp.