

Case Study // Car Parks

Client
Role
Consultant

Clifford Devlin Ltd
Specialist Sub-Contractor
George Harwood Consulting Engineers

Office Refurbishment Parking

Johnson & Johnson

SCOPE

- // Concrete Repair
- // Corrosion Management (MCI & Anodes)
- // Deck Waterproofing
- // Anti-Carbonation Coatings

DETAILS

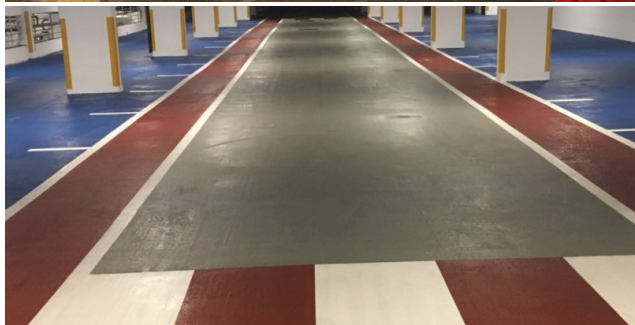
- // Office car park
- // Split-level structure
15,000m² comprising four separate parking decks of decks re-waterproofed along with 3,000m² of ramps
- // Soffits, columns & walls protected with anti-carbonation coatings

Case Study //

Car Parks

Client | Clifford Devlin Ltd
Role | Specialist Sub-Contractor
George Harwood Consulting Engineers

Before: Dark & Unwelcoming Environment



After: Fully Protected Decks

The scope of this refurbishment was to carry out concrete repairs throughout the double, split-level structure comprising four separate parking decks directly beneath a large office building.

This was followed by the application of deck waterproofing, anti-carbonation coatings to soffits, columns & walls and installation of movement joints in

Before: Decks & Columns Unprotected



After: Light & Bright Interior Improvements

the parking decks & ramps. Large areas of the reinforced concrete decks had to be re-cast as the result of damage caused by salt-chloride attack to the previously unprotected parking levels.

The decks of this 570-space car park were re-waterproofed using Sikafloor 161 & Pronto 18 to running aisles and parking bays with Sikafloor RB28 used in other

Deck Breakouts



Propping during Re-casting

areas. Some 15,000m² of decks were re-waterproofed along with 3,000m² of ramps and Sika's anti-carbonation coatings applied to approximately 17,000m² applied to other concrete surfaces during the 52-week programme.

For expert advice, or if you wish to view our previous case studies, please have a look at our website www.cemplas.co.uk

Est. 1969
cemplas //
REPAIR // PROTECT // TRANSFORM

Cemplas Waterproofing & Concrete Repairs Ltd
Cemplas House, 25a, Breakfield, Ullswater Industrial Estate, Coulsdon CR5 2HS

T: 020 8654 3149 F: 020 8656 6984
E: info@cemplas.co.uk W: www.cemplas.co.uk



www.cemplas.co.uk