

Concrete Repairs & Waterproofing

The Shard, London

SCOPE

// Waterproofing

DETAILS

- // Application of waterproof membrane to all 'wet' areas of infinity pool at Shangri-la Hotel on Level 52 of Shard
- // Re profile all pool sides and tops including casting moulds of curve sections
- // Specialist flooring division of Cemplas re-laid pool floor screed

Case Study // Waterproofing

Client | Corus Group
Role | Specialist Sub-contractor

As an approved RIW applicator, Cemplas Waterproofing and Concrete Repairs Ltd were approached by the Corus group to apply RIW waterproof membrane Tilesafe to all 'wet' areas of the infinity pool area for the Shangri-la Hotel which is based on Level 52 of the iconic Shard building.

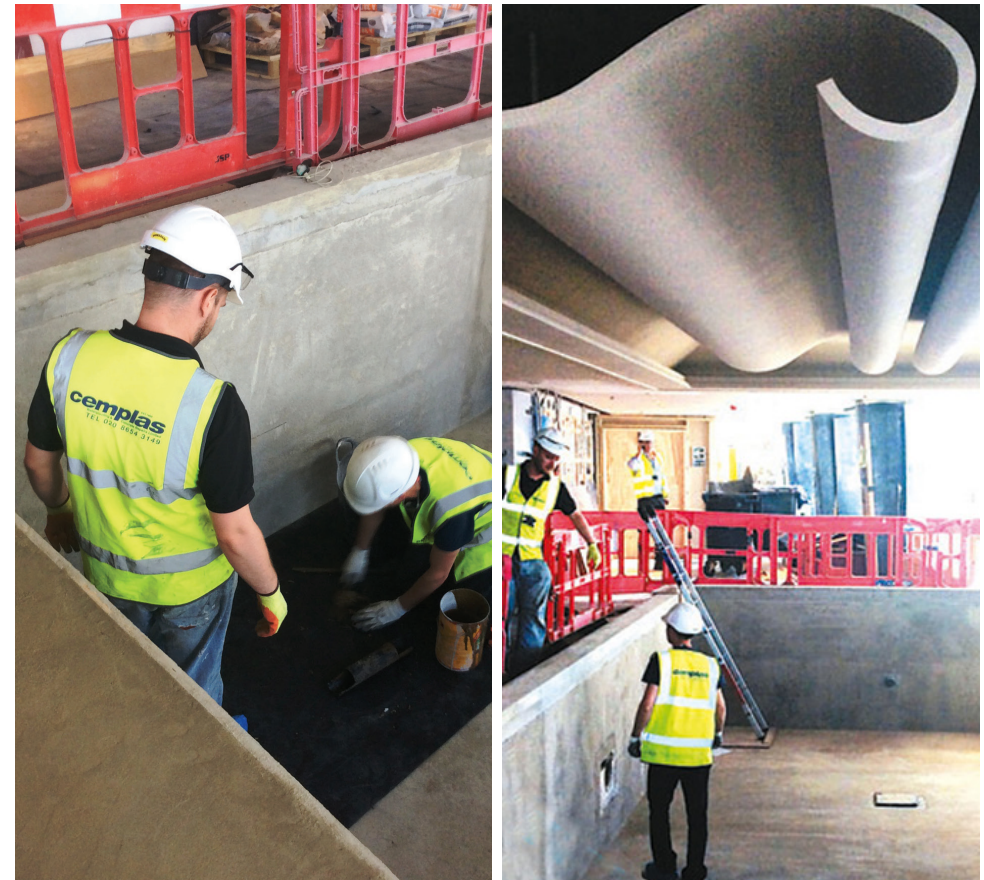
The Initial works involved Cemplas operative undertaking surface cleaning, followed by the application of Tilesafe primer and Tilesafe membrane. These areas were subsequently protected by a rigid plastic sheet and overlaid with tile adhesive and marble tiling.

Subsequent to our involvement on this project, Cemplas were asked to offer their expert knowledge and assistance when it was noted that the specialist pool liner had failed. Cemplas had to completely re profile all the pool sides and tops including casting moulds of curve sections on site using Ardex A35 mix and Ardex specialist renders working to zero tolerances with all levels set and checked by laser.

Following the completion of these works, the specialist flooring division of Cemplas then re-laid the pool floor screed to a zero tolerance a depth of 130mm in three layers using Ardex A35. This work was carried out efficiently and in very difficult circumstances as all waste water and products had to be containerised for disposal.

Cemplas completed the work ahead of the target programme for getting the pool back in use and subsequently were then asked to advise on a solution to make good around the new light fitting pockets within the walls. Cemplas selected Fosroc EP10 epoxy grout as this in a very rapid curing product which was then pumped by hand into the light pockets.

For over 40 years Cemplas have demonstrated a systematic approach to solving client's specific needs, and this project was successfully completed using expertise in concrete repair, rendering, screeding and waterproofing demonstrating once again the ability of Cemplas to be a 'one stop' solution for specialist applications.



To view the previous case studies of specialist works undertaken by Cemplas, please visit www.cemplas.co.uk

cemplas Est. 1969
REPAIR // PROTECT // TRANSFORM

Cemplas Waterproofing & Concrete Repairs Ltd
Cemplas House, 25A, Breakfield, Ullswater Industrial Estate, Coulsdon CR5 2HS

T: 020 8654 3149 F: 020 8656 6984
E: info@cemplas.co.uk W: www.cemplas.co.uk



www.cemplas.co.uk