

## Steel Frame Car Park Refurbishment

University of Warwick Car Parks 8 and 15

### SCOPE

- // Deck Waterproofing
- // Concrete Repair & Coatings
- // Movement Joints
- // Line Marking
- // Stairwell Refurbishment

### DETAILS

- // 350 spaces over two separate MSCP's
- // Combined 5000m<sup>2</sup> of split-level deck waterproofing
- // Breakout and re-cast new staircase treads and landings

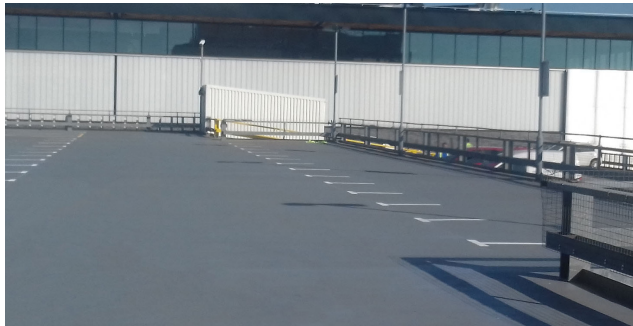


# Case Study //

## Car Parks

Client | **University of Warwick**  
 Role | **Principal Contractor**  
**Scott, White & Hookins LLP**

**Before:** Exposed Concrete Decks



**After:** Fully Protected Decks

**The scope of these refurbishments was to repair and re-waterproof the split-level top decks of two separate car parks. The existing surfacing to both car parks had failed allowing water ingress resulting in damage to the concrete (decks and soffits).**

The top decks of both car parks were prepared by captive shot blasting and were patch-repaired prior to the application Tremco's Rapid-Cure MMA deck waterproofing

**Before:** Damaged Soffits from Water Ingress



**After:** Protected Soffits

system. With ramps re-waterproofed as well as decks, protective anti-carbonation coatings were also applied to the soffits of both top decks.

Badly damaged and corroding staircase landings and treads had to be broken out and replaced with an epoxy resin mortar. Once re-cast the landings and treads were protected with a slip resistant coating with all nosing's highlighted in yellow for improved safety.

**Before:** Badly Corroding Stair Treads



**After:** Re-cast & Protected Staircases

Our package of works, as specified by Scott, White & Hookins LLP, also included re-protection of galvanised steelwork and drainage modification works

**For further advice and/or information regarding ALL of our services, please visit [www.cemplas.co.uk](http://www.cemplas.co.uk) or contact us via the details below.**

**Est. 1969**  
**cemplas** //  
 REPAIR // PROTECT // TRANSFORM

**Cemplas Waterproofing & Concrete Repairs Ltd**  
 Cemplas House, 25a, Breakfield, Ullswater Industrial Estate, Coulsdon CR5 2HS

T: 020 8654 3149 F: 020 8656 6984  
 E: [info@cemplas.co.uk](mailto:info@cemplas.co.uk) W: [www.cemplas.co.uk](http://www.cemplas.co.uk)



[www.cemplas.co.uk](http://www.cemplas.co.uk)