

## Case Study // Flooring

Client | Olympia London  
Role | Principal Contractor

### Historic Exhibition Venue Flooring

Olympia Exhibition Centre, London

#### SCOPE

- // Captive Blasting
- // Flooring Replacement

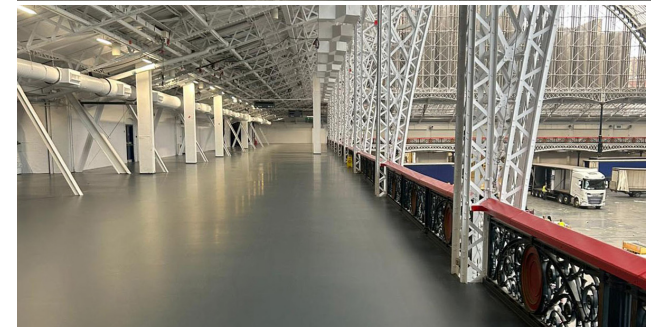
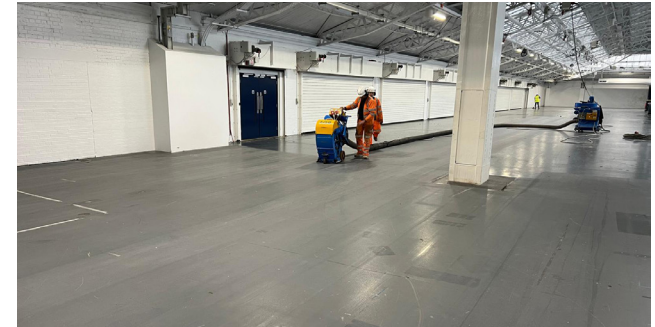
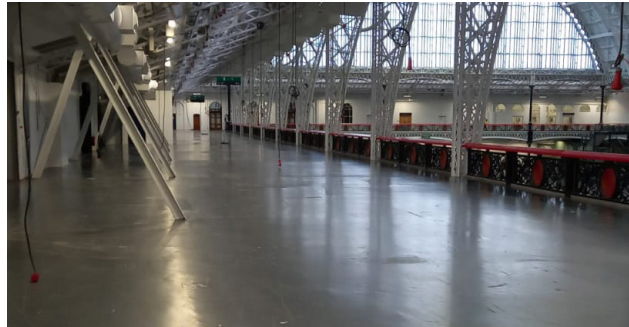
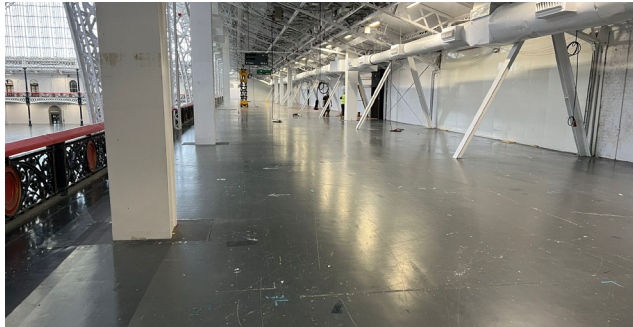
#### DETAILS

- // Grade II listed Exhibition Centre
- // >4,000m<sup>2</sup> of Conifloor IPS system applied for a durable, self-smoothing finish
- // Varying temperatures created microclimates, requiring real-time adjustments
- // Meticulously planned due to a packed events calendar left zero margin for delays



# Case Study // Flooring

Client | Olympia London  
Role | Principal Contractor



**At the heart of one of London's most prestigious exhibition spaces, the Olympia Exhibition Centre, Grand Hall galleries – housed within a Grade II listed structure – underwent a critical renovation to replace its aging flooring system. These historic balconies, integral to the venue's unique character and functionality, had seen decades of footfall and were in urgent need of a modern solution that could respect the building's heritage while meeting rigorous performance demands.**

Before installation could begin, the existing surface was carefully prepared using captive blasting – a dust free, controlled technique that effectively cleans and profiles

the substrate. This method was chosen not only for its efficiency but also for its ability to ensure optimal adhesion for the new Conica Conifloor IPS flooring system. Renowned for its durability and self-smoothing formulation, the system was ideally suited for the demands of the project. In total, an area of 4,320m<sup>2</sup> was successfully refurbished, providing a resilient, high-performance surface, tailored to the arena's unique requirements.

A notable challenge came from the timing of the project. The application was carried out in the middle of winter, a notoriously difficult season for flooring work. Unlike other systems that rely on a chemical catalyst to speed up curing, the Conifloor IPS is an air-dry product – meaning

it's heavily influenced by ambient temperature. Inside the enormous arena, temperatures varied from one area to another, creating a series of microclimates. This made it incredibly difficult to predict when each layer of the system would cure, necessitating close monitoring of conditions and real-time adjustments to the approach.

The most defining challenge wasn't technical but logistical. With a tight turnaround dictated by a calendar packed with pre-booked, high profile events, there was zero margin for delay. To meet this unforgiving timeline, work continued through the traditional two-week Christmas shut down – an unconventional decision that highlighted our dedication and flexibility.

**Est. 1969**  
**cemplas** // **REPAIR // PROTECT // TRANSFORM**

**Cemplas Waterproofing & Concrete Repairs Ltd**

Cemplas House, 25A, Breakfield, Ullswater Industrial Estate, Coulsdon CR5 2HS

T: 020 8654 3149 W: [www.cemplas.co.uk](http://www.cemplas.co.uk)

[www.cemplas.co.uk](http://www.cemplas.co.uk)